



# Liquid ceramic mixer

## with rotating tank

● Mechanical engineering

● Realizations

○ Cabling

○ Machines

This mixer is used to **mix** different products in order to obtain a homogeneous result.

A rotating resin tank serves as a container for the element to be stirred. The **304L STAINLESS STEEL** stirrer is fixed to the base frame.

This allows **the centre** of the tank **to be freed** to soak parts in the mixture **during rotation**.

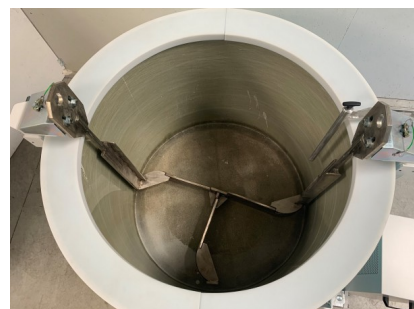
A torque limiter allows the tank to **disengage** in the event of a blockage. All the mechanical elements have been dimensioned to operate 24 hours a day, 7 days a week.

Protective covers and mud flaps protect against rotation of the bowl. Various accessories complete the mixer (surface filters, anti-pollution magnets, etc.).

Handling is carried out using a **pallet truck** or a **conventional stacker**.

SPECIFICATIONS :

- **Rotationnal speed= 28 rpm**
- **Asynchronous motor 3kW**
- **Max tank load= 3T**
- **Resin tank Ø1200**
- **Dimensions (mm)= 2000x1400x1700**



Reference : 3078

Project added the 11/09/20



**CEREST**

20 Rue des Frères Lumière  
68000 Colmar - FRANCE



**EMAIL**

cerest@cerest.com



**PHONE**

+33 (0)3.89.21.02.56



**INTERNET**

www.cerest.com